



# MANUKORIHI GOLF CLUB INC.



## Club Captain's Report

Hello to all, hope all is well.

**CHAMPION OF CHAMPIONS.** Three players went to Waverly Kingston 76 & 74 nett hitting off +4, Xavi 76 & 74 nett and Barry who didn't post a nett score. Thank You to those three men traveling down that far.

**TARANAKI 3 DAYER:** Full up at the moment with the 8 teams we have entered. But if you want to go on the short list, please let me know just in case we have someone pull out cheers.

**LAST WEEK:** Well, the rain came in on Saturday and I always knew Kerry the DUCK Edgcombe was a good rain player ...shooting his best ever SCORE 75 so well do Kerry great effort, this was followed by K brown with a strong 40 PTS and some choppers with 39 each

Raffles well supported once again and thanks to the team for getting them out there, with eight winners with a couple doubling up as winners.

**CLUB PENNANTS:** The list is up on the board if you want to play pennants this year for the men. Also, the dates are there Aswell so please cross check and make sure you can play. If you are interested put your name up. We will need at least 16 players as we will put in two teams, maybe three if we get the numbers EG 24 players.

**NOTE:** Only names on the list will be taken as available so don't miss out thanks. If You can't get out to the club by end of month let me know I will put your name up thanks.

**NOTE:** Some Pennant Captains may take you home later than expected.

**THIS WEEKEND:** *Club cups please if you have them at home, we need them back this Saturday thanks.*

**CLOSING DAY HAMPER** 25<sup>th</sup> November and the BARRY BROWN CUP along with PRIZE GIVING

So, we have a \$10 entry, and **ALL THE MONEY GOES BACK INTO THE PRIZES....**

### **BUT WAIT THERE'S MORE**

We do have another entry request please. Can **EVERYONE** bring a food item that they can spare. We are doing a Xmas drive to give to those who really need it. We think as a club this is a great idea for us all two show I little bit love?????? (If

you can give a little more, please do so and make some ones Xmas a little more special)

**SUNDAY 26<sup>TH</sup> CLUB OPEN HAMPER:** Many hands make light work so all help would be greatly appreciated so if you can help with raffles etc let us know cheers.

**Caterer: SPECIAL THANKS TO THE TEAM FOR GREAT FOOD.**

**Let's get in and support our foodie team and keep the cash flow going.**

Still no takers below we need someone please cheers.

**Chance of a lifetime? We are looking for a project manager. A Volunteer to oversee some up-and-coming projects we are looking into. So, if you think this is your skill set is please catch up with us. Things like getting quotes, meeting 3<sup>rd</sup> parties at the course to get ideas and show them the plans etc. As a lot of the current committee have day work it's a little hard to get away and we need someone who can get all the info, and this would allow us to push these jobs forward cheers.**

**NEEDED:** If you have any old sets of clubs that would be suitable for kids, can you catch up with Esther White, please. She is looking at teaching some of the kids and JR how to play the game and could do with some gear etc cheers.

**SPECIAL NOTE:** Thanks, Andrea in using her skill set for getting hampers done up , so thanks Missy .....much appreciated.

Thanks for your time Lofty and Chop.

## **Volunteer's Day**

To all volunteers who have contributed their time and efforts to the club this year, you are invited to come along on **Sunday 10th December** to the Club for a BBQ and refreshments to recognise your efforts. Be at the clubhouse at 1pm and we will set off for 12 holes of golf with refreshments to follow.

Cheers  
Robin

## **Tuesday Ladies 9 Hole Report**

This week we closed the season by playing Stableford with the 18-hole ladies. The wind got the better of some of us but the winner was Rhonda with 18 points. Santa also visited and left us some festive gifts!

The Summer Stableford Cup starts on 5 December.

Happy holiday season.

Sarah

Manukorihi Newsletter 22 November 2023



## Tuesday Ladies Golf

Awesome final Day with playing 9 holes and sharing Secret Christmas Gifts.

Best score of the day was Rhonda McFarlane 18 stableford and Annette Hooper 21.

Good luck to all the players playing in the upcoming Christmas Hampers.

Summer golf will start on Tuesday 5th and Saturday 9th December. There will be 6 rounds of stableford the best 4 counting. The 18-hole players will also have an eclectic on those rounds.

Unfortunately, Rochelle will not be catering on Tuesdays over the December/January break.

New Committee for 2024 - Fay Rowe-Club Captain  
Rachelle Quin - Vice Club Captain  
Lesley Elliot - Secretary  
Rhonda McFarlane- Treasurer  
Teresa Tuffery - Committee

This is my last sign off, Hope everyone has a great Christmas

Marie

## Waitara New World Wednesday Club

A great turnout of 39 players happy to be playing in some fine weather. John Kretschmar had the best score with 40 points for a \$20.00 new world voucher, all other winners picking up a \$10.00 voucher.

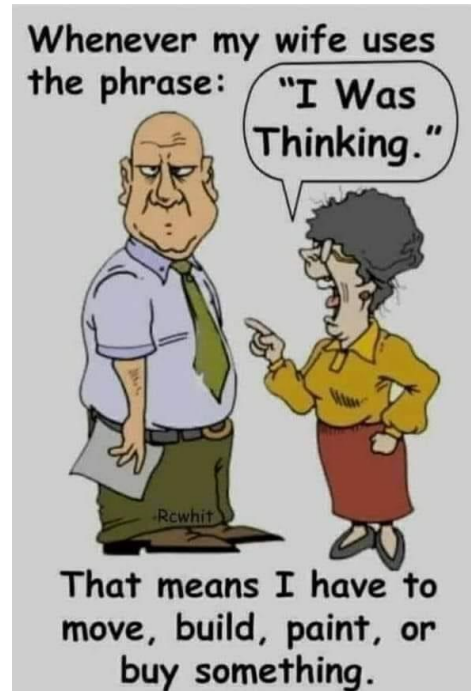
Greg Fowler 39, Peter Pearce 38, John Davey, Keven O'Donnell, Gary Pigott and Wayne O'Donnell all 37. Helmuth Adams, Ron Oxenham, Jude Mita, Teddy Danych, Richard Crowe, and Gary Fulton all 36 points.

Six people had a 2, Jude Mita, Wayne O'Donnell. Greg Fowler, Richard Hamel. Robert Fraser and Gary Pigott also had the closest to the pin on the 7<sup>th</sup>, 10 Lucky raffle winners as well.

Next week will be the Waitara New World mini hamper, \$10.00 entry fee, Raffles will be extra.

Cheers

David.



## PRO TIP - back to basics

**The Right Elbow (for right hand players / left elbow for lefties)** is a very important part of the body & must be used correctly to achieve Power. The elbow must bend approximately 90 degrees at the top of the backswing to make **THE POWER** & then pulling it into your

side/tummy on the way down, before **IMPACT**. **THE SECRET** is being able to delay straightening the elbow, it's called "The Late Hit." If you straighten the arm/elbow too soon which we call "casting" you lose your power!!! Now understanding the use of the elbow in golf is like any sport where power is needed, take soccer or rugby when you have to kick the ball, you bend your leg approximately 90 degrees to get **POWER**. Cricket, squash, tennis, any bat, racket or club you bend either wrist or arm to create **POWER**, make the **90 DEGREES** then **PRACTICE THE LATE HIT** for **POWER** don't be throwing your "little body" at it or casting.

Lastly, you can think of the elbow on your practice swing but never whilst intending to hit the ball. The reason being, if you are concentrating on the proper position of your elbow just before impact you will push the ball!! You can't then change your focus from the elbow onto hitting the ball because everything is happening so quickly!!! So, get onto the practice tee & work on the **ELBOW for POWER** & when on the course think of your **ELBOW** during the Practice swing but not on **THE BALL!!!** It's a hellova **GAME!!!**



**Good Luck & Good Golfing.**

**Professional John Garner.**

## Bar Roster

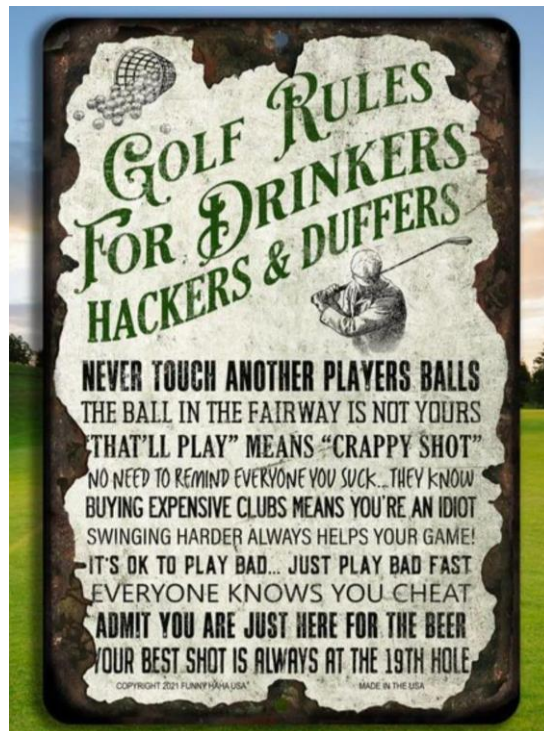
<b>November Bar Roster</b> ( <i>Volunteers needed please see Nicole Mancer</i> )		
<b>Date</b>	<b>Time to 2pm</b>	<b>Time 2pm to 5pm</b>
25 <sup>th</sup>	Kev	Nicole

**Please remember that if your duty date does not suit, please swap with someone. Huge thanks for your time given to our club each month. Nicole Mancer**

SUN	MON	TUE	WED	THU	FRI	SAT
			1 New World Sweepstake 9:30 Mass start	2 Twilight 4pm to 6pm.	3 Ladies Open Xmas Hamper @ Manukorihi	4 stableford (L) Top Dog Spare rnd 3
5	6 Veterans Pennant Final round @ Manukorihi	7 Melbourne Cup Bing Bong Bango/Top Dog spare Day	8 New World Sweepstake 9:30 Mass start Ladies - golf, Dinner & Prozegeiving	9 Twilight 4pm to 6pm	10 Mid Monthly 9 - 11am	11 Nett (L) Top Dog Rnd 4
12	13 Ladies Annual Meeting Clubrooms 6pm	14 Captains Day	15 New World Sweepstake 9:30 Mass start	16 Twilight 4pm to 6pm	17	18 Mens Champion of Champions venue TBA others stlb (L)top dog finals
19	20 Committee Meeting	21 Ladies Closing Day. Mixed 9&18 Secret Santa	22 New World Sweepstake 9:30 Mass start	23 Twilight 4pm to 6pm Reserve day Champion of Champions Ladies	24	25 Barry Brown Club Mini Hamper & Club Prize giving Mass Start 9am
26 Open Xmas hamper @ Manukorihi	27 Reserve Day Veterans Pennant	28	29 New World Sweepstake 9.30 Mass start	30 Twilight 4pm to 6pm,		

*Clubhouse Copies Printed courtesy of Revital Fertilizer*

Manukorihi Golf Club Newsletter Editor: Martin Nobbs Mob: 021 930 594  
 Email: nobbsm@gmail.com





# Kaitake Golf Club

## Open XMAS Hamper

**ENTRY FEE \$30.00**

(Includes BBQ lunch + Two's)

**SUNDAY 19th NOVEMBER 2023**

3 Mens Divisions & 1 Ladies Division

Phone or email Clubhouse for Tee Time

06 7527665

[kaitakegolf@xtra.co.nz](mailto:kaitakegolf@xtra.co.nz)



**Sponsored by:**



**The glass Man**

# THE KIWI BUTCHER

## URENUI GOLF

MIXED OPEN TOURNAMENT



**Saturday 25 November 2023**

**ENTRY \$30.00**

**2's Optional (extra \$2.00)**

Limited to 88 Entries

(Divisions dependent upon number of entries)

**HAMS for best Nett prizes**

**Vouchers for all other prizes**

**FOR START TIMES CONTACT:**

**Johnny 0274 430 439**

**Phill 0272 838 976**

Cabinet food available for purchase

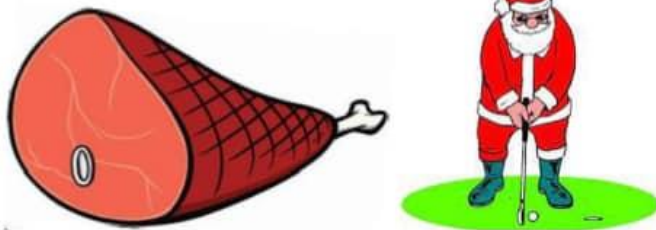
# MANUKORIHI GOLF CLUB

## OPEN CHRISTMAS HAMPER

Sunday

26th November 2023

Three Tee Start between  
8.30 am and 9.40am



Tee Time booking essential

Club House 06 7547497

TXT ROBERT BUTLER (CHOP) 027 232 5595

JODY BOUND (LOFTY) 027 756 4329

TO BOOK A TEE / TIME SPOT.

With thanks to New World Waitara



# NEW WORLD

Entry fee \$35  
includes 2's

Men's and Women's  
Divisions  
Gross prize in all  
divisions  
Nett &  
Stableford

Nearest the pins and  
long drive!

Raffles and the Eliminator  
!

Grab a group of  
friends and come  
along!



STRATFORD GOLF CLUB

# CHRISTMAS OPEN 2 MAN AMBROSE

SPONSORED BY



2ND DECEMBER TEE TIMES FROM 9.30-12PM

**\$30 PER PERSON**

**RAFFLES**



***FUN!***

CONTACT MURRAY 021936082  
or email [murray@cookshonda.co.nz](mailto:murray@cookshonda.co.nz)



# Christmas Hamper

Fitzroy Golf course, Sunday 3rd December

Entry fee: \$35.00 includes 2's and Lucky Draws

Limited field

GROSS-STABLEFORD

SENIORS, INTERMEDIATE, JUNIOR, LADIES DIVISIONS

Tee off times ; 07:00am – 12.30pm

**Proudly**  
SPONSORED BY



## TLC MEATS

**Tony Varga** Owner

The Richmond Centre, New Plymouth  
Corner Egmont & St Aubyn Streets  
P: (06) 759 6878 | M: 021 216 2607  
E: tlcmeats@vodafone.co.nz

Passionate about meat!

PRIZEGIVING 5:30-5.45pm. Every prizewinner gets a ham

For a tee time, Fitzroy members sign up online,  
Members of other clubs; call the clubhouse 758 2574,  
Or call or text Karl 021 376 766.

*Ladies welcome*

internal

**Manukorihi Golf Club  
120th ANNUAL GENERAL MEETING  
Monday 7pm on 4th December 2023**

**To be held at Manukorihi Golf Clubhouse  
Wills Road, Waitara**



16  
DEC

# Christmas Cheer

Mens,  
womens  
Divisions.

Tee off time between  
10am -12.

Net,  
Stableford  
Gross  
Novalty prizes

ENTRY PRICE

PRIZES

\$40

FOOD

NON-GOFLERS ARE WELCOME TO  
PLAY.

Enter online:

[www.ruapehugolf.co.nz](http://www.ruapehugolf.co.nz)

All enquiries to be directed to Gareth Mcguigan 0276454545

